

# BMW-APPROVED TECHNOLOGY AT YOUR SERVICE

## 4 HI-Q CAMERAS

Operating light  
indicators

## INTEGRATED LIFTING SYSTEM

With target automatic  
tracking function

## ERGONOMIC SHELF

With additional USB ports

## PRESETTING FOR ADDITIONAL MONITOR

OR for A4 printer

## TROLLEY PRESETTING

## BMW 67 503 576 APPROVAL

CERTIFIED ACCORDING TO  
BMW STANDARDS, SPECIFICATION V3.1

# NEW



## KDS 3D TOP BMW

IT is the new BMW-approved wheel aligner with passive targets and 4 high-resolution digital cameras, to ensure measurement maximum precision and accuracy.

The automation of wheel alignment operations and the extreme reliability of components enhance its productivity.

Premium PC with the latest Windows IoT operating system, **new EXACT TOP BMW software** including a complete database with multi-brand technical specifications are part of the rich standard equipment.

With these features, **KDS 3D TOP BMW** stands as an industry benchmark and a safe investment for wheel alignment professionals.

## MAIN FEATURES

- **Four high-resolution cameras** for HI-Q machine vision with Global Shutter technology;
- **High-resolution lightweight targets** with integrated anti-glare filter;
- **Better immunity to solar glare** thanks to measurement by image difference;
- **Professional Personal Computer** with Intel Inside CPU, MULTILINGUAL Windows IoT operating system and inkjet printer included;
- **Exact TOP-BMW graphic wheel alignment software**, with new graphic interface and updated calculation algorithms, to increase measurement performance. International database included;
- **New ergonomic design** with additional USB ports on the worktop;
- **Optical-synoptic** and audible indicators to guide the operator during wheel alignment operations;
- **Electronically controlled movement** with measuring unit encoder for faster and more accurate positioning;
- **Target automatic tracking function** (included);
- **Continuous measurement** of frame heights using dedicated, lightweight, high-resolution targets;
- **Maximum steering measurement** using dedicated, lightweight, high-resolution targets;
- **Tilt measurement** of the steering wheel through electronic inclinometer with wireless transmission;
- **Optional trolley presetting**;



## HIGH-QUALITY CAMERAS

**Four Hi-Q cameras** with global shutter technology. Optimised low-distortion lenses with sunlight anti-glare coating.



Operation light indications thanks to the integrated synoptic panel.

## MEASUREMENT BY IMAGE DIFFERENCE

The "measurement by image difference" eliminates measurement problems in critical sunlight conditions or in glaring conditions.



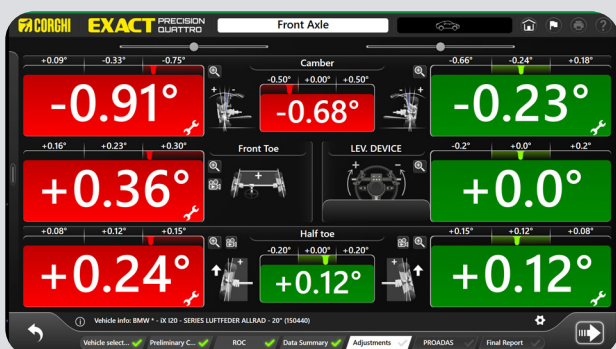
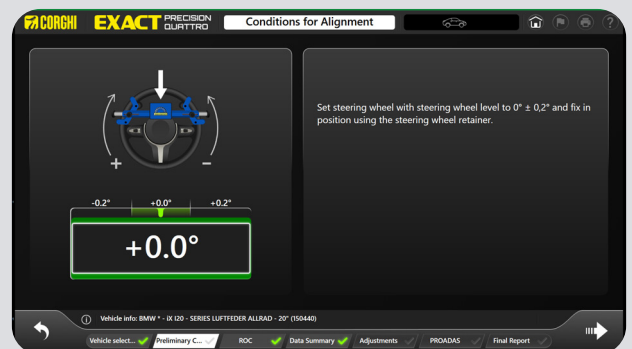
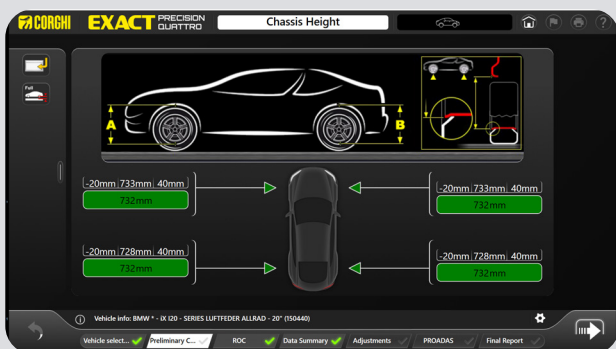
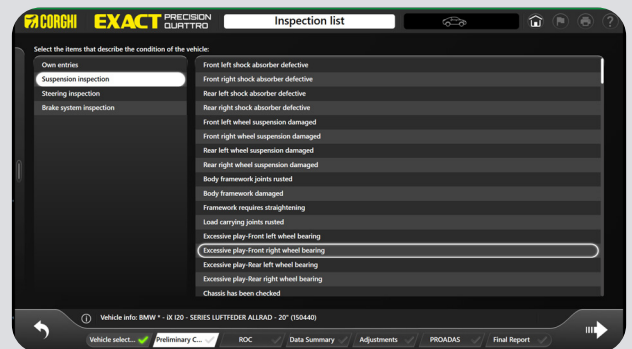
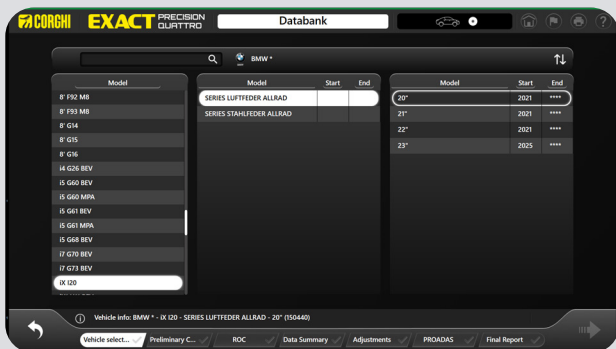
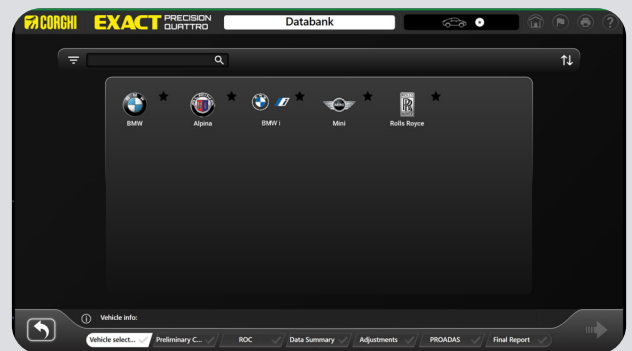
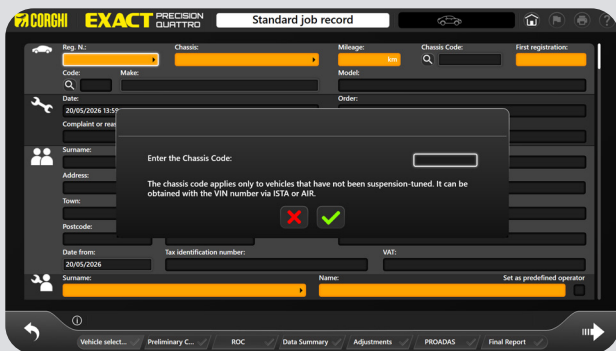
## ERGONOMIC WORK SURFACE

The design is completed by the ergonomic work surface with additional USB ports and the presetting for the A4 printer.



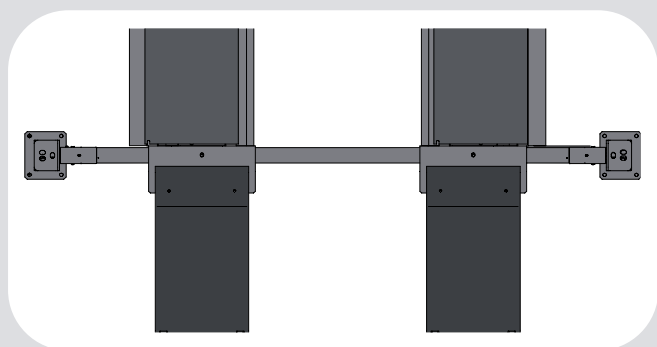
# EXACT TOP BMW SOFTWARE FOR THE WHEEL ALIGNMENT PROFESSIONAL

New modern and professional graphic interface specifically developed for the wheel alignment specialist. Rich with new features, such as the lower progress bar, the convenient vertical pop-up selection menu, and enhanced data visibility in the operating area.



## TARGET AUTOMATIC TRACKING FUNCTION (INCLUDED)

A useful help to save time. Time is saved, as the operator is no longer required to set the measuring unit working height manually.

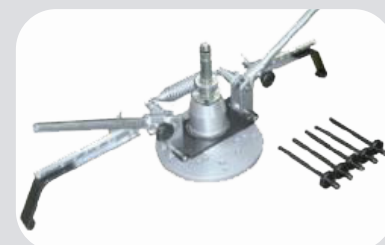


Thanks to its compact design, it is suitable for installations in small areas and installations with four-column lifts. Compatible with pit and scissor, four-column and parallelogram lift installations.

## STANDARD EQUIPMENT

### BMW quick clamps

Compensation skip, specific to BMW vehicles.



### High-resolution lightweight targets

Equipped with integrated anti-glare filter.



### Clamp holder trolley

Useful trolley for storing clamps, targets and accessories.



## Lightweight mini-targets

For continuous and automatic measurement of frame heights  
Mounted on the upper part of the wheel arches. Adapters for BMW-approved wheel arches included.



## Additional targets

For measuring maximum steering. Magnetically attached to the front targets, they allow maximum steering measurement without the use of turntables equipped with encoders.



## Brake and steering lock



## Pair of turntables H50 mm

Fitted with rubber protective covers.

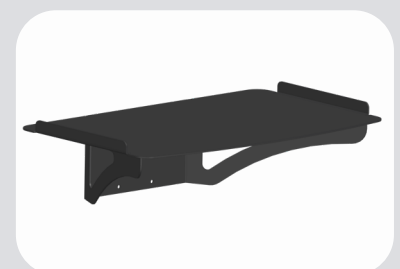


## Electronic inclinometer

For steering wheel with wireless connection.



## Printer support



A4 printer



32" LCD monitor



## OPTIONAL ACCESSORIES



**8-33100159**

4-point clamp with carbon rails 10-26"



**8-33100166**

4-point clamp with 10-26" carbon rails and resin-coated claws



**803269218**

Set of quick clamps for compensation skip for rim with diameters 10-21"



**8-34900072/90**

Wheel aligner trolley



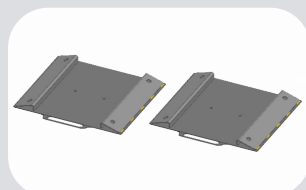
**8-34100062**

Pair of turntables H50 mm fitted with rubber protective covers



**8-33100189**

Self-centring ClampOnTyre quick clamp



**8-34100063**

Pair of turntable ramps



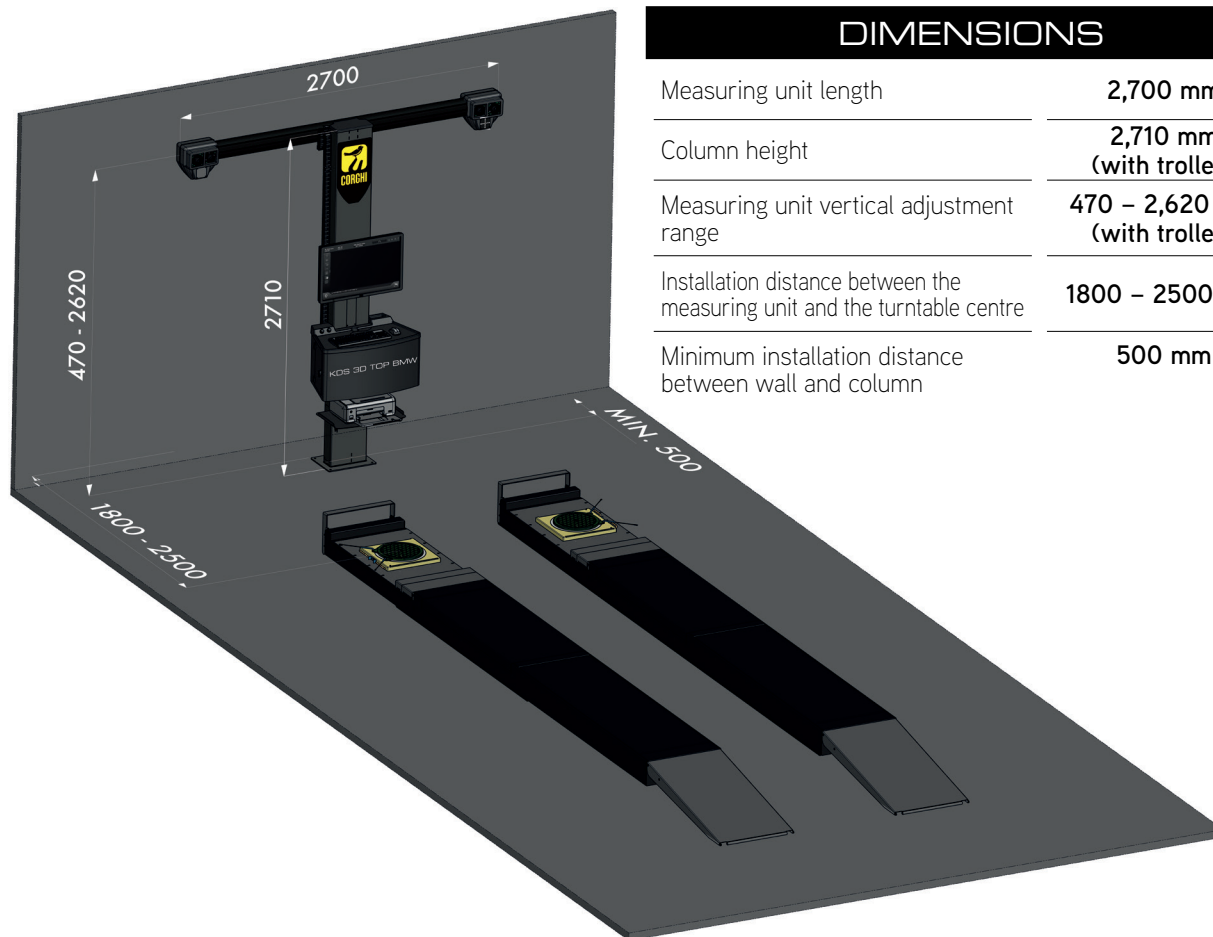
**8-34100065**

50 replacement adhesives for attaching mini-targets for measuring frame heights

**8-34100061**

Complete calibration and control kit.

# INSTALLATION AREA



## DIMENSIONS

Measuring unit length	2,700 mm
Column height	2,710 mm (with trolley)
Measuring unit vertical adjustment range	470 - 2,620 mm (with trolley)
Installation distance between the measuring unit and the turntable centre	1800 - 2500 mm
Minimum installation distance between wall and column	500 mm

# TECHNICAL DATA

## MEASURING RANGES

Total toe	± 20°
Individual toe	± 10°
Camber	± 10°
Caster	± 30°
Kingpin	± 30°
Thrust angle	± 10°
Steering difference at 20°	± 10°

## POWER SUPPLY

Power supply voltage	115-230 Vac 50-60 Hz 1 pH
Absorbed power	500 W
Central unit (cabinet)	35 kg
Camera head	40 kg
Column	125 kg